

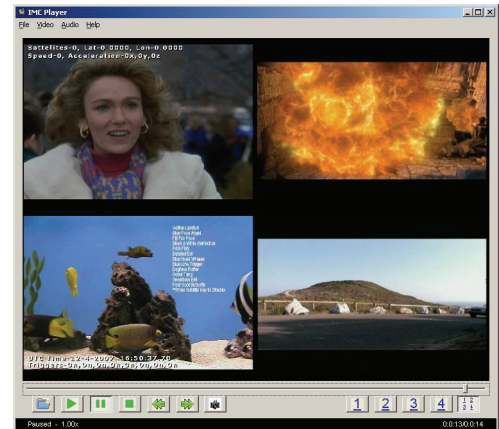
Overview



The new Sony FCBEX11D color auto-block camera incorporates high performance Digital Signal Processing (DSP) and sophisticated firmware that greatly enhances the operability and picture quality compared to conventional auto-block cameras. This new ultra-compact camera features a 1/4-type EXview HAD™ CCD, 120x zoom ratio (12x optical/10x digital) and minimum illumination of 1.0 lux (50 IRE). This camera is ideal for space-restricted and general purpose applications such as low vision systems, police cars, mass transit, and pipe inspection. The new FCBEX11D offers superior night vision performance to the FCBIX11A, but inherits many of its excellent features such as slow AE Response, Advanced Spherical Privacy Zone Masking and Multi-line on-screen display. Also, the FCBEX11D can be controlled by Costar's Mobile DVR models: MDVR-210 and MDVR-310. When used with the MDVR-210 or MDVR-310 the camera features a "one-touch zoom" function. This feature enables the camera to zoom to a predetermined zoom ratio by pressing a button on the faceplate of the DVR which is ideal for viewing license plates.

Features

- ⊗ High-Performance Digital Signal Processing (DSP)
- ⊗ High-Speed Serial Interface (max. 38.4 Kb/s) with TTL Signal-Level Control (VISCA™ protocol)
- ⊗ High-Quality Image in both Digital-Zoom and Slow-Shutter Modes
- ⊗ Various AF Modes including Zoom Trigger and Interval Modes
- ⊗ Expanded Mode Parameter for Shutter Speed and Gain Level
- ⊗ Low Power Consumption (1.5/1.6 W with inactive mode)
- ⊗ EEPROM Backup System without Battery



Line Up

- ~ 530 Lines Horizontal Resolution
- ~ 1/4-type Exview HAD CCD
- ~ Compact and Lightweight
- ~ 120x Zoom Ratio (12x optical, 10x digital)
- ~ Minimum Illumination of 1.0 lx (typical)
- ~ Key Switch Control Compatibility
- ~ Spot AE
- ~ Field Memory/Freeze Mode
- ~ High-speed Serial Interface (maximum 38.4 Kb/s) with TTL
- ~ Signal-Level Control (VISCA protocol)
- ~ Electronic Shutter/Slow Shutter
- ~ On-screen Display (date/time/title)



Choice ♦ Value ♦ Service

2720 Commodore Drive, Suite 150
Carrollton, Texas 75007

Tel: 972-446-8900 Fax: 972-446-8866

Our people make a difference.

1-888-446-1301

www.southimg.com

Specifications

Image device	1/4-type Exview HAD CCD
Horizontal Resolution Value	530 TV Lines
Lens	10x optical zoom, F1.8 to F2.9, f=4.2 mm (wide) to 42.0 mm (tele)
Digital zoom	12x (120x with optical zoom)
Viewing angle (H)	46° (wide) to 4.6° (tele)
Minimum object distance	200 mm (wide), 1.0 m (tele)
Sync system	Internal/External (V-lock)
Minimum illumination	1.0 lx (typical) (F1.8, 50 IRE)
S/N ratio	More than 50 dB
Electronic shutter	1/1 to 1/10,000 s, 22 steps
White balance	Auto, ATW, Indoor, Outdoor, One-Push, Manual
Gain	Auto/Manual (-3 to 28 dB, 2 dB steps)
AE control	Auto, Manual, Priority mode, Bright, EV compensation, Backlight compensation, Slow AE
EV compensation	-10.5 to +10.5 dB (1.5 dB steps)
Back-light compensation	On/Off
Flicker cancel	Auto
Focusing system	Auto (Sensitivity: normal, low), One-Push AF, Manual, Infinity, Interval AF, Zoom Trigger AF
Picture effect	Neg. Art, Black & White, Mirror Image, E-flip
Camera operation switch	Zoom tele, Zoom wide
Video output	VBS: 1.0 V _{p-p} (sync negative), Y/C Output
Camera control interface	VISCA (TTL signal level), baud rate: 9.6 Kb/s, 19.2 Kb/s, 38.4 Kb/s, Stop bit: 1/2 selectable
Storage temperature	-4 to 140 °F (-20 to 60 °C)
Operating temperature	32 to 122 °F (0 to 50 °C)
Power Requirements	DC 6 to 12 V
Power consumption	1.9 W (motors inactive), 2.8 W (motors active)
Weight	3.3 oz (95 g)
Dimensions (W x H x D)	1 7/16 x 1 5/8 x 2 3/8 inches (35.9 mm x 40.8 mm x 59.2 mm)

Choice ♦ Value ♦ Service

2720 Commodore Drive, Suite 150
Carrollton, Texas 75007

Tel: 972-446-8900 Fax: 972-446-8866

1-888-446-1301

Our people make a difference.

www.southimg.com